

## Introduction to ScreenRuler

ScreenRuler is a piece of software which allows part of the screen to be highlighted or underlined. It can assist you with viewing and concentrating on text. It provides a "strip" across the screen in a colour of your choice and allows you to have the rest of the screen coloured and darkened out if desired. You can choose from a range of ScreenRuler modes and alter the ScreenRuler settings if you wish.

Lorem ipsum dolor sit amet, consectetur adipiscing elit. Nunc vitae purus nec urna dictum tempus vel nec odio. Fusce bibendum turpis sit amet ipsum pretium nec euismod ante ullamcorper. Cras tortor magna, pretium nec molestie vel, consectetur ornare mi. Suspendisse potenti. Sed orci turpis, facilisis eget pretium sit amet, varius at nisi. Duis ac nisl purus, in ultricies felis. Vivamus volutpat eros eu mi auctor rhoncus. Etiam porta, sem sit amet rutrum viverra, dolor elit lobortis ipsum, id vulputate tellus est non enim. Vestibulum quis hendrerit tellus. Nunc eget velit at odio sagittis rutrum. Nulla facilisi. Pellentesque dictum nunc eu augue vehicula eget molestie odio lobortis. Suspendisse suscipit, orci eget dictum dictum, lectus ante sodales diam, in ultricies massa elit vitae ante. Aenean varius iaculis neque ut vulputate. Maecenas mi arcu, faucibus ut aliquet vitae, tempor et felis. Donec luctus auctor nulla, quis viverra elit dapibus ut.

## ScreenRuler Modes

There are three possible ScreenRuler modes which are configurable in the ScreenRuler settings screen:

### Ruler

This is the default setting. It provides a reading ruler across the current screen, shading out above and below:

>Lorem ipsum dolor sit amet, consectetur adipiscing elit. Nunc vitae purus nec urna dictum tempus vel nec odio. Fusce bibendum turpis sit amet ipsum pretium nec euismod ante ullamcorper. Cras tortor magna, pretium nec molestie vel, consectetur ornare mi. Suspendisse potenti. Sed orci turpis, facilisis eget pretium sit amet, varius at nisi. Duis ac nisl purus, in ultricies felis. Vivamus volutpat eros eu mi auctor rhoncus. Etiam porta, sem sit amet rutrum viverra, dolor elit lobortis ipsum, id vulputate tellus est non enim. Vestibulum quis hendrerit tellus. Nunc eget velit at odio sagittis rutrum. Nulla facilisi. Pellentesque dictum nunc eu augue vehicula eget molestie odio lobortis. Suspendisse suscipit, orci eget dictum dictum, lectus ante sodales diam, in ultricies massa elit vitae ante. Aenean varius iaculis neque ut vulputate. Maecenas mi arcu, faucibus ut aliquet vitae, tempor et felis. Donec luctus auctor nulla, quis viverra elit dapibus ut.

## Underline

Underline provides a line across the current screen:

>Lorem ipsum dolor sit amet, consectetur adipiscing elit. Nunc vitae purus nec urna dictum tempus vel nec odio. Fusce bibendum turpis sit amet ipsum pretium nec euismod ante ullamcorper. Cras tortor magna, pretium nec molestie vel, consectetur ornare mi. Suspendisse potenti. Sed orci turpis, facilisis eget pretium sit amet, varius at nisi. Duis ac nisl purus, in ultricies felis. Vivamus volutpat eros eu mi auctor rhoncus. Etiam porta, sem sit amet rutrum viverra, dolor elit lobortis ipsum, id vulputate tellus est non enim. Vestibulum quis hendrerit tellus. Nunc eget velit at odio sagittis rutrum. Nulla facilisi. Pellentesque dictum nunc eu augue vehicula eget molestie odio lobortis. Suspendisse suscipit, orci eget dictum dictum, lectus ante sodales diam, in ultricies massa elit vitae ante. Aenean varius iaculis neque ut vulputate. Maecenas mi arcu, faucibus ut aliquet vitae, tempor et felis. Donec luctus auctor nulla, quis viverra elit dapibus ut.

## Overlay

Overlay provides a full screen colour overlay:

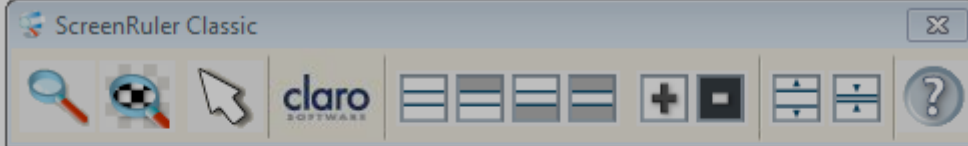
Lorem ipsum dolor sit amet, consectetur adipiscing elit. Nunc vitae purus nec urna dictum tempus vel nec odio. Fusce bibendum turpis sit amet ipsum pretium nec euismod ante ullamcorper. Cras tortor magna, pretium nec molestie vel, consectetur ornare mi. Suspendisse potenti. Sed orci turpis, facilisis eget pretium sit amet, varius at nisi. Duis ac nisl purus, in ultricies felis. Vivamus volutpat eros eu mi auctor rhoncus. Etiam porta, sem sit amet rutrum viverra, dolor elit lobortis ipsum, id vulputate tellus est non enim. Vestibulum quis hendrerit tellus. Nunc eget velit at odio sagittis rutrum. Nulla facilisi. Pellentesque dictum nunc eu augue vehicula eget molestie odio lobortis. Suspendisse suscipit, orci eget dictum dictum, lectus ante sodales diam, in ultricies massa elit vitae ante. Aenean varius iaculis neque ut vulputate. Maecenas mi arcu, faucibus ut aliquet vitae, tempor et felis. Donec luctus auctor nulla, quis viverra elit dapibus ut.

## Magnified Ruler: Using ScreenRuler Classic

If you would like a magnified ruler, you will have to configure your computer and run the classic version of ScreenRuler.

The classic version has a magnified ruler option within the "Ruler" mode. There is no ruler colouring and the colour outside of the ruler can only be black. To run the classic version:

- On **Windows XP**
  1. Locate where ScreenRuler is installed (usually C:\Program Files\Claro Software\ScreenRuler).
  2. Open the folder called "ScreenRuler\_Classic".
  3. Run the "ScreenRuler\_Classic.exe" file.
- On **Windows Vista**
  1. You need to disable the Aero theme, to do this:
    1. Right click on the desktop and choose Personalize.
    2. Click the "Window Color and Appearance" link.
    3. In the next screen, click the "Open classic appearance properties for more color options" link near the bottom.
    4. Choose "Windows Vista Basic".
  2. Locate where ScreenRuler is installed (usually C:\Program Files\Claro Software\ScreenRuler).
  3. Open the folder called "ScreenRuler\_Classic".
  4. Run the "ScreenRuler\_Classic.exe" file.
- On **Windows 7**
  1. You need to disable the Aero theme, to do this:
    1. Right click on the desktop and choose Personalize.
    2. Scroll down the list of themes and choose "Windows 7 Basic".
  2. Locate where ScreenRuler is installed (usually C:\Program Files\Claro Software\ScreenRuler).
  3. Open the folder called "ScreenRuler\_Classic".
  4. Run the "ScreenRuler\_Classic.exe" file.



Lorem ipsum dolor sit amet, consectetur adipiscing elit. Nunc vitae purus nec urna dictum tempus vel nec odio. Fusce bibendum turpis sit amet ipsum pretium nec euismod ante ullamcorper. Cras tortor magna, pretium nec molestie vel, consectetur ornare mi. Suspendisse potenti.

Sed orci turpis, facilisis eget pretium sit amet, varius at nisi. Duis ac nisl purus, in ultricies felis. Vivamus volutpat eros eu mi auctor rhoncus.

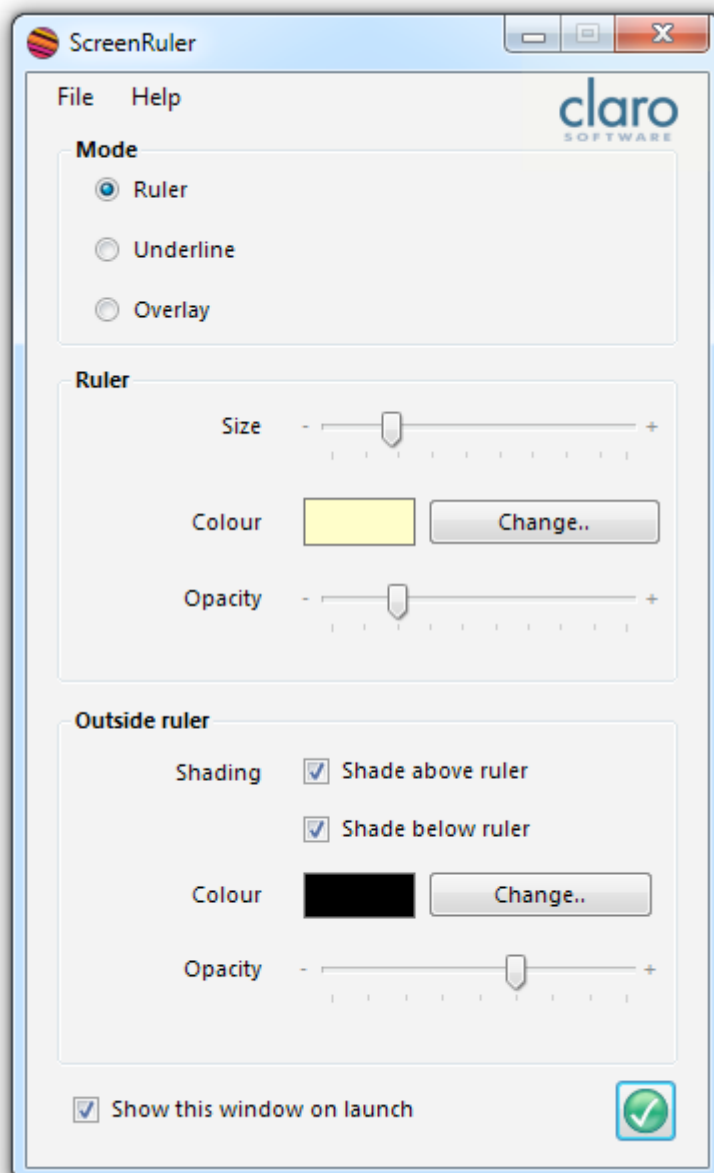
eu augue vehicula eget molestie odio lobortis. Suspendisse suscipit, orci eget dictum dictum, lectus ante sodales diam, in ultricies massa elit vitae ante. Aenean varius iaculis neque ut vulputate. Maecenas mi arcu, faucibus ut aliquet vitae, tempor et felis. Donec luctus auctor nulla, quis viverra elit dapibus ut.

## ScreenRuler Settings

Once you have launched ScreenRuler, it will stay as an open application and will work with all other software, following the mouse pointer and the typing cursor. You can minimise the ScreenRuler window so it sits in the system tray out of the way so you can carry on working. If you would like to change how ScreenRuler looks, you can change the settings through the ScreenRuler window.

If the ScreenRuler is currently minimised, right click on the system tray icon and select Settings > More Settings...

The following ScreenRuler screen will appear:



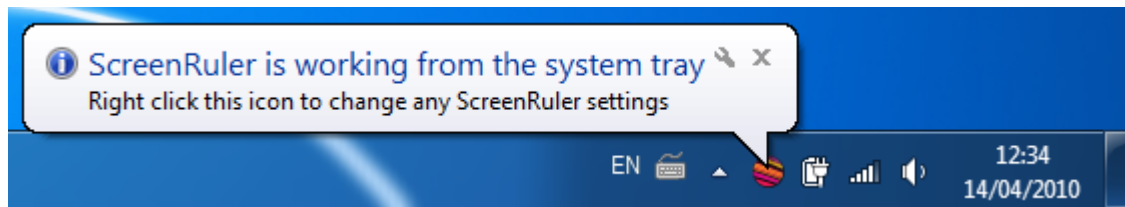
You can alter the following through the ScreenRuler window:

- Mode
  - Ruler: A reading ruler across the current screen, shading out above and below.
  - Underline: A line across the current screen.
  - Overlay: A full screen colour overlay.
- Ruler
  - Size: Move the slider to change the height of the ruler.
  - Colour: Click on the "Change.." button to change the colour of the ruler.
  - Opacity: Move the slider to change the transparency level of the ruler.
- Outside Ruler (background)
  - Shading: Check the "Shade above ruler" and "Shade below ruler" boxes to show the corresponding shading above/below the ruler.
  - Colour: Click on the "Change.." button to change the colour of the background/outside of the ruler.
  - Opacity: Move the slider to change the transparency level of the area outside of the ruler.
- Show this window on launch
  - This setting, when checked, shows the ScreenRuler settings window each time the program is launched. Uncheck this setting if you want ScreenRuler to launch and minimise the settings window to the system tray automatically.

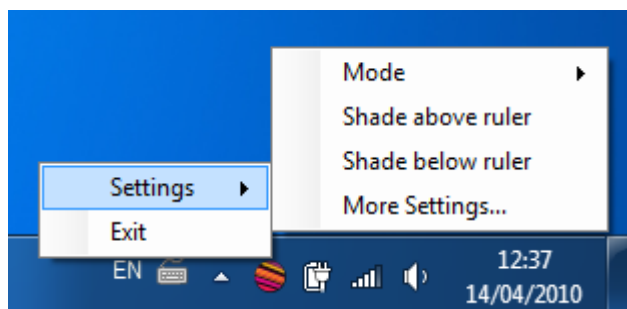
When you have finished configuring ScreenRuler, click the window's minimise button in



the top right corner or the OK button in the bottom right corner .



To access some of ScreenRuler's features or re-open the settings window, right click on the ScreenRuler icon in the system tray:





## Support and Contact

We would like to thank you for using ScreenRuler.

You can see more Claro Software products at [www.clarosoftware.com](http://www.clarosoftware.com)

If you have any queries, please visit our help pages at [help.clarosoftware.com](http://help.clarosoftware.com) or contact us at [support@clarosoftware.com](mailto:support@clarosoftware.com)

We value your feedback.

Claro Software Ltd  
Tel: +44 (0)1772 977 888  
[www.clarosoftware.com](http://www.clarosoftware.com)